

★ 2012/2013 ANNUAL REPORT ★



ERC Resource & Referral, Inc., d/b/a Child Care Aware® of Eastern Kansas  
Corporate Office: 1100 SW Wanamaker Road, Suite 101 • Topeka, Kansas 66604  
785-357-5171 phone • 877-678-2548 toll free • 785-357-1813 fax

Visit our website at [east.ks.childcareaware.org/](http://east.ks.childcareaware.org/)

# 2013 Board of Directors

## Officers

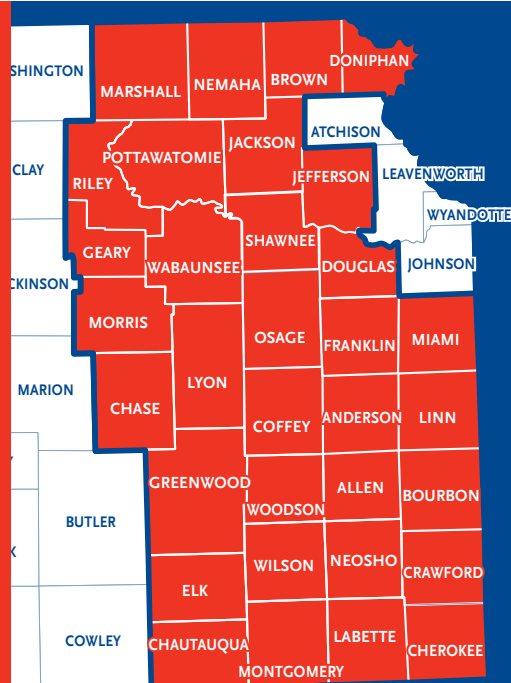
Sarah Breymeyer, President  
Jeanie Schuler, President Elect  
Melinda Clemens, Secretary  
Morgan Padgett, Treasurer  
Eric Patterson, Treasurer Elect  
Jennifer Raine, Immediate Past President

## Directors

Avis Cowhick  
Liz Daily  
Bette Felker  
Heather Geiger  
Jacque Hill-Barton  
Nancy Lindberg  
Melissa Wangemann  
Coleen Wenger

## Staff

Reva Wywadis, Executive Director  
Becky Meyer, Accountant  
Linda Gwaltney, Executive Assistant  
Eryn Allen, Marketing & Communications Coordinator  
Laurie Pigg, Director of Referral Services  
Jessica Esquivel, Billie Segrist & Debi Stiles, Referral Counselors  
Debra McClelland, Referral Counselor/ Research & Data Specialist  
Marie Treichel & Renee Wohletz, Provider Services Managers  
Vanessa Apodaca, Ann Beedles, Audrey Danielson, Deb Danielson, Michelle Gilbert, Talia Juiliano, Elisa Kramer, Jennifer Pishny, Star Robinson, Tanisha Troutt, Deana Turner & Lisa Wilk, Early Care & Education Specialists  
Nancy Rohr, Inclusion & Transition Specialist  
Jenny Eberth, QQRIS Coach  
Eleanor Strecker, Early Literacy Specialist  
Alisa Meyer, Stephanie Prue & Dorothy Smith, Library Resource Specialists  
Sadie Som, Receptionist/ Administrative Assistant



Child Care Aware® of Eastern Kansas serves the 33 highlighted Kansas counties.

## Services to Child Care Programs

Child Care Aware® of Eastern Kansas serves just under 1,800 child care programs in our service delivery area, offering professional development and consultation services. Special initiatives this year included:

**Literacy Connections** is a new program available to child care programs to assist them in better preparing children for school. This program became available starting in January of 2013 to programs with children, ages infant to 5 years old, who will attend a Topeka USD 501 school. Literacy Connections served 24 programs in the USD 501 area of Shawnee county, with a total of 58 classrooms participating.

**Kansas Quality Rating Improvement System (QQRIS)** currently available in Douglas county, is the changing face of quality improvement in Kansas. Its mission is to improve early learning experiences for children, birth to age five, by creating a system that promotes high-quality, child-centered care.

QQRIS served a total of 24 programs. Of the participating programs that were rated through November 2013, 100 percent of those who attended the *Five Protective Factors* training and received enhanced coaching increased their "Family Partnerships" component scores. Total possible points in the "Family Partnerships" component is 10, and the range of point increase was between 4 to 8 points.

The **Infant/Toddler Program** works to support family child care providers and center-based child care programs to increase the quality of care for infants, toddlers and their families by providing:

- Professional development opportunities.
- Technical assistance, consultation and support.
- Resources and materials.
- Community collaborations and partnerships.

**Quality Steps** is a year-long program designed to assist new and experienced providers in increasing infant/toddler enrollment and improving the quality of infant and toddler learning environments. It is available throughout our entire service delivery area and is currently serving 19 programs.

The **Strengthening Families Project** is a statewide and national initiative committed to reducing child abuse and neglect by implementing the *Five Protective Factors*. These factors are parental resilience, social connections, concrete support in times of need, knowledge of parenting and child development, and social and emotional competence of children. Research studies support the common-sense notion that when these protective factors are well established in a family, the likelihood of child abuse and neglect diminishes. Research shows that these protective factors are also “promotive” factors that build family strengths and a family environment that promotes optimal child and youth development. Strengthening Families is available throughout our entire service delivery area and has 21 programs enrolled.



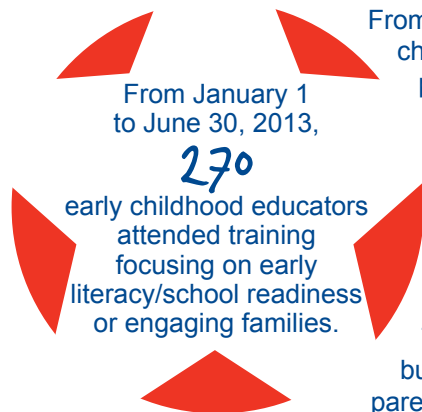
**Early Childhood Wellness** is an initiative that works to improve physical activity, nutrition and health outcomes for children and families. It is available throughout our entire service delivery area and has 18 programs enrolled. Services and resources provided include professional development events, individualized coaching visits for child care professionals and collaboration with local, state and national organizations to bring child care professionals and families the most up-to-date information. This is done through the use of tip sheets, on-site visits, newsletters and social media.

Throughout the entire service delivery area, the agency provides **Short-Term Technical Assistance** through on-site visits, phone and email to assist programs in increasing the quality of child care. This year, the agency facilitated technical assistance opportunities on a variety of subjects including program management, parent partnerships, safe sleep for infants, nutrition, dental health, safe toys and fire safety.

## Community Collaborations & Partnerships

### Capital Area Smart Start/Capital Area Successful Start

**Capital Area Smart Start/Capital Area Successful Start** funding comes from the state’s tobacco settlement and flows through the Kansas Children’s Cabinet. Starting January 1, 2013, the program, previously called Capital Area Smart Start, became known as Capital Area Successful Start. Successful Start’s focus is preparing children for success in school with special emphasis on promoting early literacy. In Shawnee County, Successful Start funding supports two specific areas: services for early childhood programs and parent education services (offered by Child Care Aware® of Eastern Kansas) and home visitation services to families (offered through various home visitation programs including KCSL’s Healthy Families program, the Shawnee County Health Agency’s Bright Beginnings/Healthy Futures program, TARC’s Infant/Toddler and PACT programs, the USD 501 Parents as Teachers program, USD 501 Topeka Public Schools Pine Ridge Prep, Community Action Inc. Early Head Start, United Way Successful Connections, and the Family Service and Guidance Center).



From July 1, 2012, to June 30, 2013, the program offered 93 professional development trainings to child care providers, for a total of 266 in-service hours, offering strategies to improve classroom practices and positively impact the quality of care offered. From January 1 to June 30, 2013, Successful Start assisted 401 providers/early childhood educators through professional development and 54 classrooms received technical assistance through 148 visits. From July 1, 2012, to June 30, 2013, the agency participated in multiple family events sponsored by this program that had 353 adults and 353 children, ages 0 to 5, in attendance.

### Developing Your Family Child Care Business

The **Developing Your Family Child Care Business** program, a partnership with the Greater Topeka Chamber of Commerce/Go Topeka, introduces critically important information about the business side of the child care industry. During the 12-week course, participants develop a parent handbook and business plan. There were 10 graduates in the 2012 fall/winter course.

### Strengthening Families Douglas County

**Strengthening Families Douglas County** funding comes from the state’s tobacco settlement and flows through the Kansas Children’s Cabinet. Through this community collaborative work, our agency provides on-site KQRIS coaching to 19 early learning programs with 16 hours of free professional development focusing on the *Five Protective Factors* to strengthen families.

### United Way

The **United Way of Douglas County Grant** directly impacted children in Douglas County through supplementing an additional 5 KQRIS programs, in addition to providing 12 hours of free professional development and enhanced technical assistance for all of the 24 KQRIS programs. From January 1 to December 31, 2013, through the enhanced technical assistance to KQRIS programs on the topics of literacy and inclusion the programs that were rated this year either maintained a quality score of 5 or higher (out of 7 possible points) in the Environmental Rating sub scale Listening & Talking (early literacy component) or increased their scores. Growth range was from 1.7 to 2.33 points.



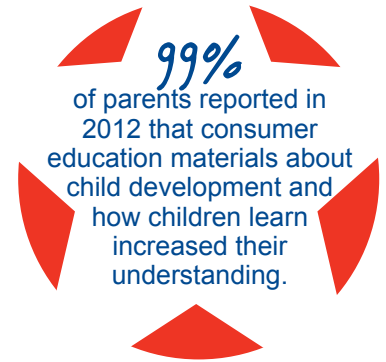
The **United Way of Greater Topeka** focused on increasing school readiness of children in two targeted zip codes in Topeka, 66605 and 66607. In 2012, 17 child care providers accessed Literacy Connections, a quality improvement program through Child Care Aware® of Eastern Kansas. In 2013, 9 child care providers accessed Literacy Connections. This program was partially funded through the United Way of Greater Topeka and its focus was on early literacy. Child care providers enrolled in Literacy Connections received 6 hours of early literacy training. They also conducted developmental screenings on each child enrolled in their program. Early literacy materials were given to providers to incorporate the skills they learned during the coaching visits they received throughout the year.

## Services to Families

The Child Care Aware® of Kansas Referral Center, operated by Child Care Aware® of Eastern Kansas, assists families throughout Kansas with their child care needs by providing referrals to regulated child care programs based on the criteria supplied by the family. Agency staff also provides support to families through the “help line” with answers to parenting questions and through referrals to other community resources.

This year, the Referral Center:

- Assisted 12,935 families statewide seeking child care referrals. Of the families, 19,063 children were assisted.
- Sought program information from 1,793 child care programs in the 33-county service delivery area and were able to maintain information for 1,211 programs.
- Provided 347,058 referrals to early learning programs for families seeking child care across the state of Kansas.
- Offered child care referrals for 8,946 children that received assistance from the Department for Children and Families (DCF).



## Services to Businesses

Child care is a necessity for working families. Child Care Aware® of Eastern Kansas provides support to businesses interested in helping employees with their child care needs, as well as providing data regarding the supply and demand of child care in a community.

To help business and community leaders better understand the correlation between child care and economic development, the agency developed a strategy for outreach to the business community that was implemented in the fall of 2013 throughout the service delivery area.

## Agency Funding

Child Care Aware® of Eastern Kansas is supported through a variety of sources including the Kansas Department for Children & Families through Child Care Aware® of Kansas, the Kansas Children’s Cabinet, the Topeka Community Foundation, the Kansas Health Foundation, the United Way (Topeka and Lawrence), the Greater Topeka Chamber of Commerce, individual donors, grants and special projects. The Designers’ Showhouse, a grassroots fundraiser in Topeka where area designers and craftsmen transform a selected home each year for public tours, also provides critical support for our agency. The agency established an endowment through the Topeka Community Foundation in 2011.

For a complete list of community partners or funding partners, visit our website at [east.ks.childcareaware.org](http://east.ks.childcareaware.org).

**Program statistics shown are for the period July 1, 2012 through June 30, 2013, unless otherwise stated.**



# Significant Accomplishments in 2012/2013

Over the past year, Child Care Aware® of Eastern Kansas has accomplished much, including:

- The Topeka Office relocated to an office space that better meets the needs of our staff and clients, allowing us to continue to offer high-quality services.
- Child Care Aware® of Eastern Kansas pursued and attained Quality Assurance in April of 2012, which is good until April 2017. This national accreditation through Child Care Aware® of America has been achieved by only a small number of child care resource and referral agencies in the nation.
- Due to a restructuring of the Child Care Aware® of Kansas network, the agency had a change in our service delivery area and expanded once again. Some of the counties previously served in the north central area moved into the western region, and we added counties in southeast Kansas. (See the map on page 2 to view our entire service delivery area.) As a result, the agency was rebranded as ERC Resource & Referral, Inc., dba Child Care Aware® of Eastern Kansas.
- In July 2013, the agency received a Recognition Grant from the Kansas Health Foundation and established the Center for Early Childhood Professional Development & Leadership. This effort brings coordination and expansion of professional development options for early childhood practitioners, as well as leadership and peer mentoring training and opportunities to build and expand capacity in the field.
- To assure the best customer service possible, the agency now maintains three offices---- the main (corporate) office in Topeka, and satellite offices in Pittsburg and Lawrence. Additionally, staff work from home-based offices in Emporia and Blue Rapids, serving child care programs in those areas. The staff now totals 30. Ongoing programs include operating the state Child Care Aware® of Kansas Referral Center, providing access to curriculum resources, offering professional development/training classes for child care providers, and on-site coaching to help improve child care quality. Special initiatives bring added focus in the areas of early literacy, wellness and building strong partnerships with families.



## Looking Ahead

This annual report, published in December of 2013, provides financial information for 2012 and program statistics through June 2013. Our mission is to support the development and learning of young children by offering programs and services that improve the quality and accessibility of child care for working families. As we look forward, Child Care Aware® of Eastern Kansas will draw upon the strength of its staff, board of directors, volunteers and supporters to make a meaningful difference in the lives of children and their families.



# Get Involved...

Because much of the funding for child care resource and referral services is federal and state funding, it is important that parents, child care providers, community stakeholders and business leaders understand their role in shaping public policy through advocacy efforts. Additionally, local government's decisions can also impact the availability and accessibility of child care for working families.

## Research-Based Uniform Messages

### K-12 Education

Studies show that early childhood programs are the BEST way to support improved academic outcomes in K-12. Children who participate in high-quality early childhood education programs are far more likely to enter kindergarten ready to learn, read at grade level by third grade, and graduate from high school or even college (*Gormley et al, 2005; Belfield et al, 2006; Barnett & Masse, 2007*).

### Brain Development

Ninety percent of a child's brain development occurs before age five. High-quality early childhood services reach children during a crucial period when foundational brain architecture is formed and experience shapes social competency, cognitive ability and mental health (*Mustard, 2008*).

### Return on Investment

Decades of research have shown that for every \$1 invested in high-quality early childhood programs, society will save \$7 down the road in the form of reduced demand on the social welfare system, decreased juvenile crime and improved participation in the economy (*Calman & Tarr-Whelan, 2005*).



## Public Policy & Advocacy Agenda

### At the national level:

- Advocate for the reauthorization of the Child Care & Development Block Grant (CCDBG).
- Continue to dialogue with legislators regarding the importance of strengthening requirements for basic training and background checks for the child care work force.

### At the state level:

- Work collaboratively with other early childhood partners and stakeholders to protect the Children's Initiative Fund.

### At the local level:

- Protect county investments in child care licensing, advocating for improved ratios of licensing surveyors to child care programs as recommended by Child Care Aware® of America.

Other policy issues affecting Kansas children and families and child care issues may arise beyond those included on this list. Please visit our website, [east.ks.childcareaware.org](http://east.ks.childcareaware.org), for updated information on public policy and advocacy issues.

# Statement of Financial Position

December 31, 2012



# 2012 Income & Expenses by Individual Program

## Assets

Cash & Cash Equivalents	\$ 50,458
Receivables	204,486
Investments	198,723
Other	<u>146,542</u>
<b>Total Assets</b>	<b>\$ <u>600,209</u></b>

## Liabilities & Net Assets

Accounts Payable	\$ 10,786
Accrued Expenses	<u>87,684</u>
Total Liabilities	<u>98,470</u>

Unrestricted	423,973
Temporarily Restricted	20,791
Permanently Restricted	<u>56,975</u>
Total Net Assets	<u>501,739</u>

<b>Total Liabilities &amp; Net Assets</b>	<b>\$ <u>600,209</u></b>
---	--------------------------

# Statement of Activities

Year Ended December 31, 2012

## Unrestricted Revenue

Unrestricted Revenue, Gains & Other Support	\$ 1,454,031
Net Assets Released from Restrictions	<u>21,898</u>
Total Unrestricted Revenue, Gains & Other Support	<u>1,475,929</u>

## Unrestricted Expenses

Program Services	1,264,277
Supporting Services	<u>229,587</u>
Total Expenses	<u>1,493,864</u>

**Decrease in Unrestricted Net Assets** \$ (17,935)

## Temporarily Restricted Net Assets

Contributions, Program Revenue & Memberships	7,242
Net Assets Released from Restrictions	<u>(21,898)</u>

**Decrease in Temporarily Restricted Net Assets** (14,656)

## Permanently Restricted Net Assets

Contributions	<u>3,879</u>
---------------	--------------

**Increase in Permanently Restricted Net Assets** 3,879

**Decrease in Net Assets** (28,712)

**Net Assets at Beginning of Year** 530,451

**Net Assets at End of Year** \$ 501,739

## Grant & Contract Income

Child Care Aware® of Kansas	\$ 888,410
Capital Area Successful Start (CASS)	247,773
United Way	73,663
Community Action-Headstart	22,622
Topeka Chamber- Developing Your Family Child Care Business	17,770
Douglas County Community Foundation	9,600
Shawnee County	1,500
Other Grants or Programs	6,210

## Other Revenue

Showhouse & Other Special Events-net of expenses	88,708
Provider Training	73,340
Individual Donations	22,836
Other Revenue	<u>12,720</u>

**Total Income** \$ 1,465,152

## Grant & Contract Expenses

Child Care Aware® of Kansas	
Quality Outreach	\$ 207,955
Referral Center	158,278
Resource & Referral Agency	141,762
KQRIS Block Grant- Saline & Shawnee Counties	103,100
KQRIS Block Grant- Douglas County	96,000
Strengthening Families	65,500
KQRIS IT KELC Block Grant	60,000
Early Childhood Wellness	25,000
Community Outreach	23,908
Other Child Care Aware® & Special Projects	6,907
Capital Area Successful Start (CASS)	234,164
CASS Pass Through to Child Care Programs	13,609
United Way	73,663
Community Action- Headstart	22,622
Topeka Chamber- Developing Your Family Child Care Business	10,873
Douglas County Community Foundation	9,600
Shawnee County	1,500
Other Grants or Programs	9,836

## Other Expenses

Administrative & General	170,754
Other Fundraising Expenses	<u>58,833</u>

**Total Expenses** \$ 1,493,864

